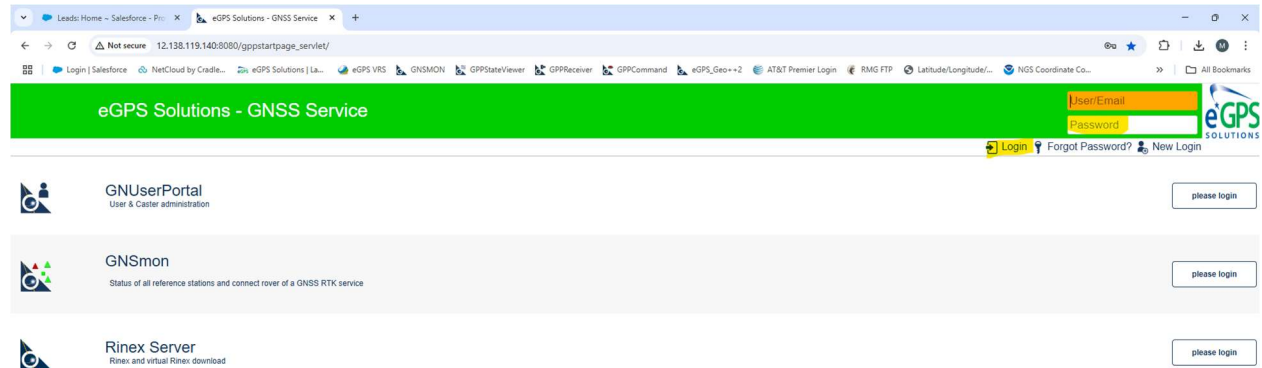
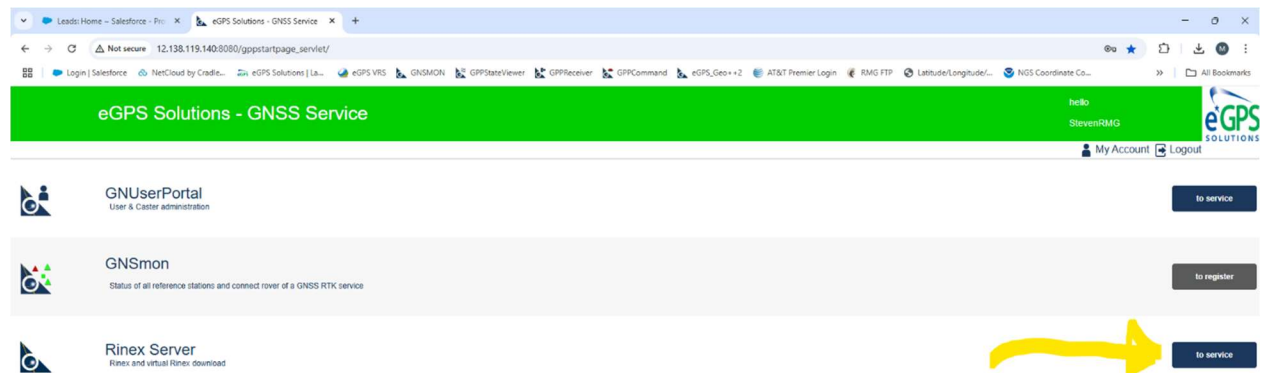


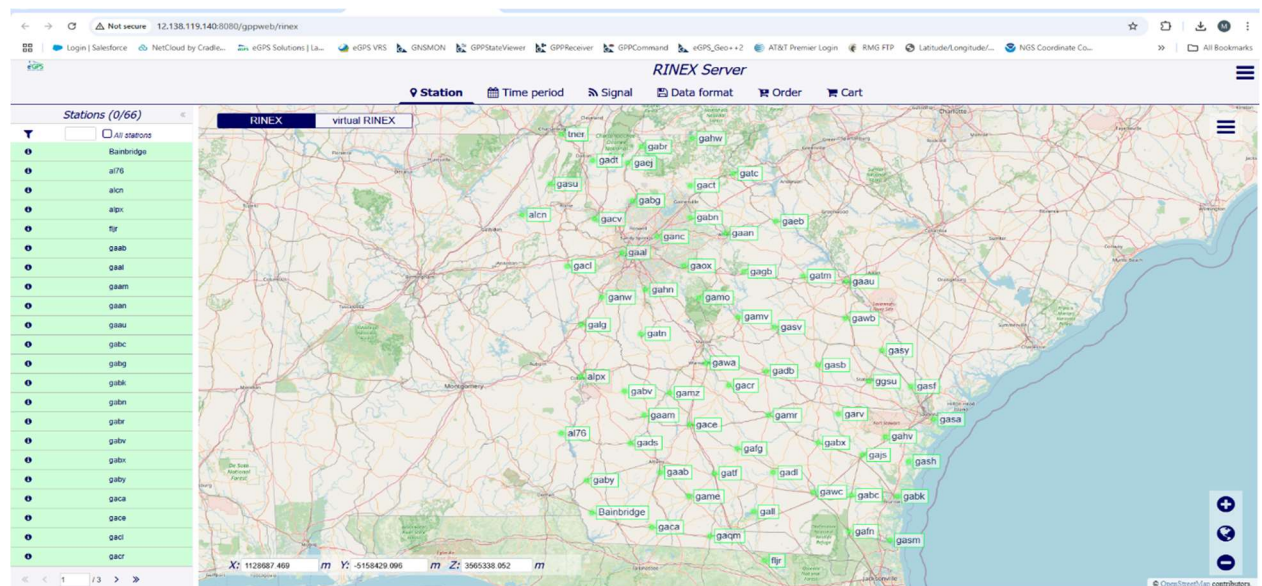
Web Application Address: 12.138.119.140:8080/gppstartpage_servlet/



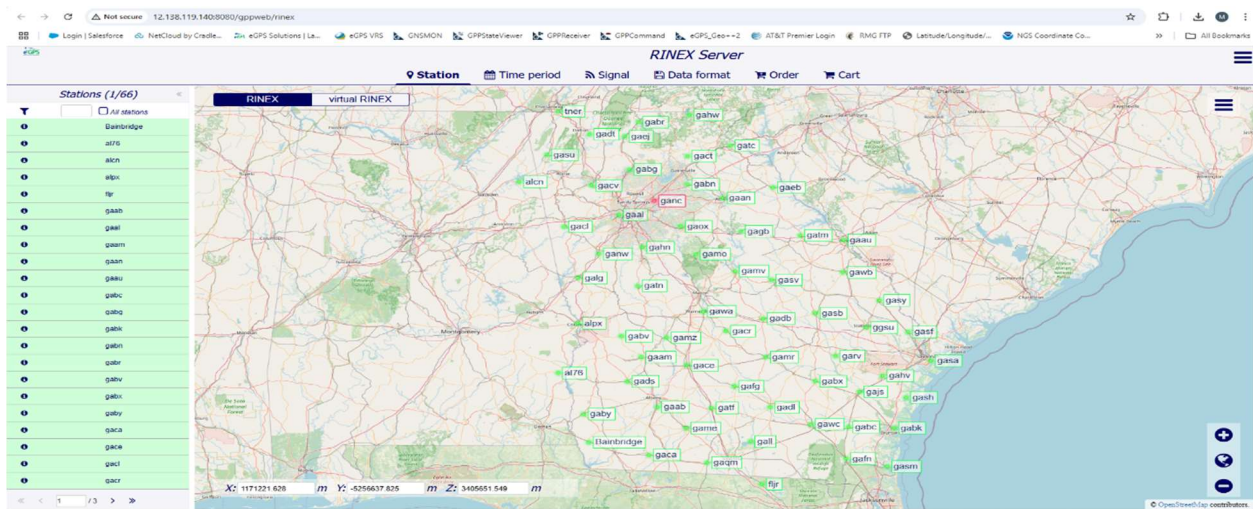
Login with your username and password.



Select Rinex Service.



Rinex Services Page.



Select the Station you want data from. Then select Time period tab at the top.

Timevalue:

Timezone:

Timeformat:

Observation chooser:

Start of observation time:

Start of observation date:

Duration of observation:

Observation interval [sec]:

Selected time period from: 2025-02-13-07:00 UTC-05:00 (GPS-week: 2353, GPS-day: 44, GPS-hour: m, GPS-second: 388800.0)

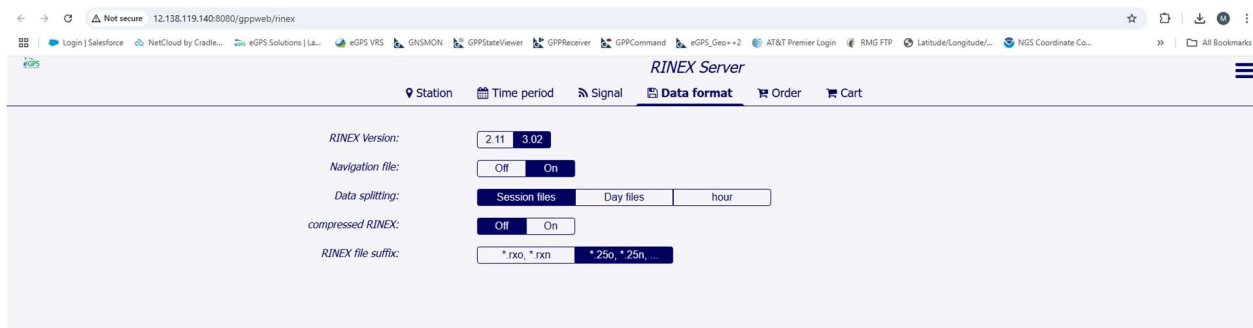
Selected time period to: 2025-02-13-08:00 UTC-05:00 (GPS-week: 2353, GPS-day: 44, GPS-hour: n, GPS-second: 392400.0)

Leap seconds: 18 seconds will not be used for calculation from/to UTC

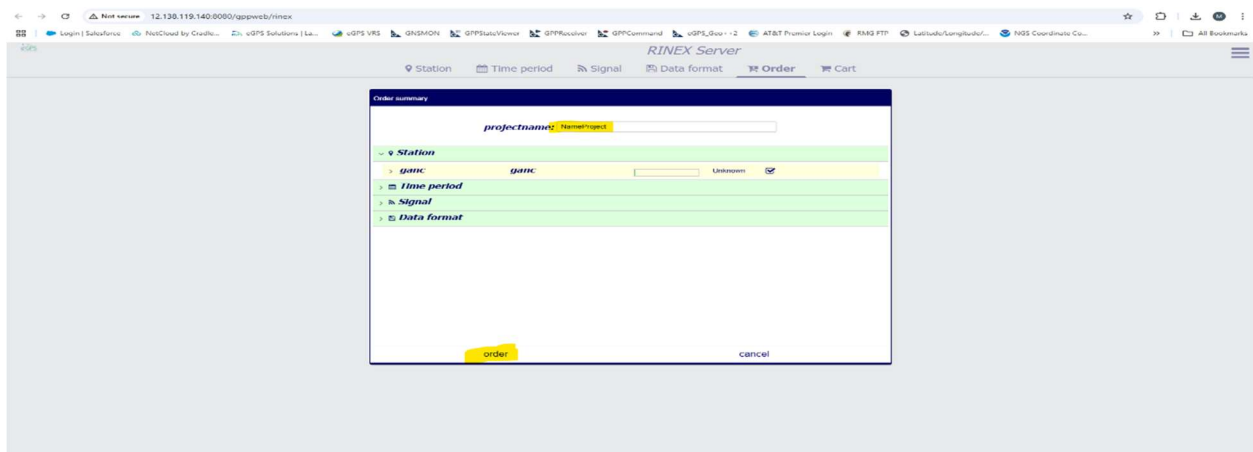
Select Time, date, Duration and interval needed.

GNSS System	Freq. Band / Frequency	Channel or Code
GPS	L1	C/A L2P
	L2	L2C (M) X (M+L) P2 (AS off) Z-tracking and similar (AS on)
	L5	L5 X (L+Q)

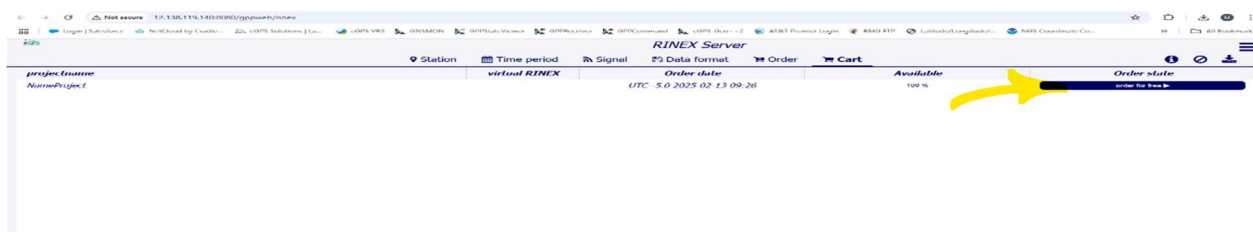
In the Signals tab you can select which signals you need, by default all are selected.



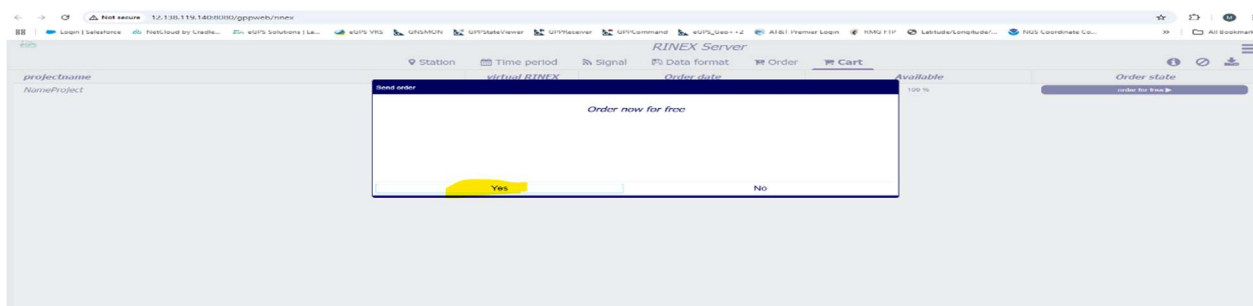
In the Data format Tab, you can select the Rinex Version and data formats. The above selections are the default settings.



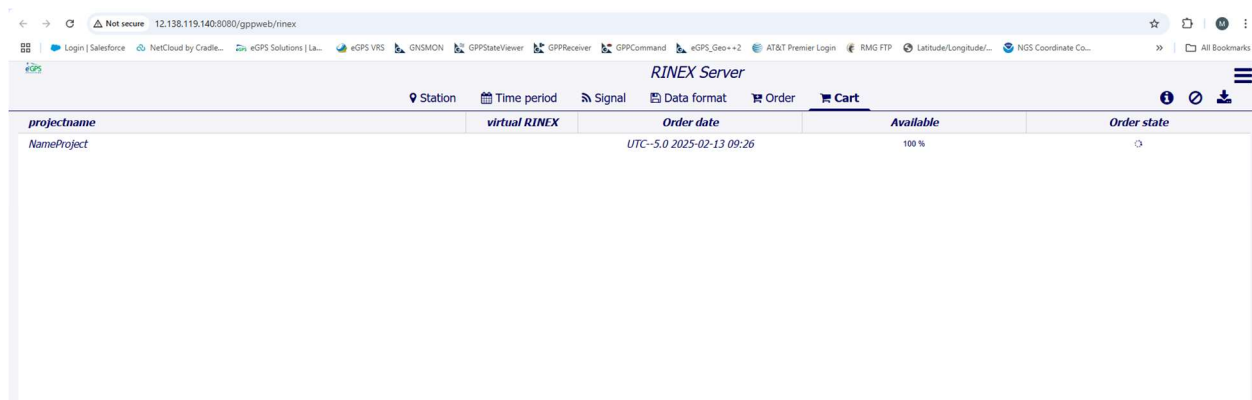
In the Order Tab, give the project a unique name and press order.



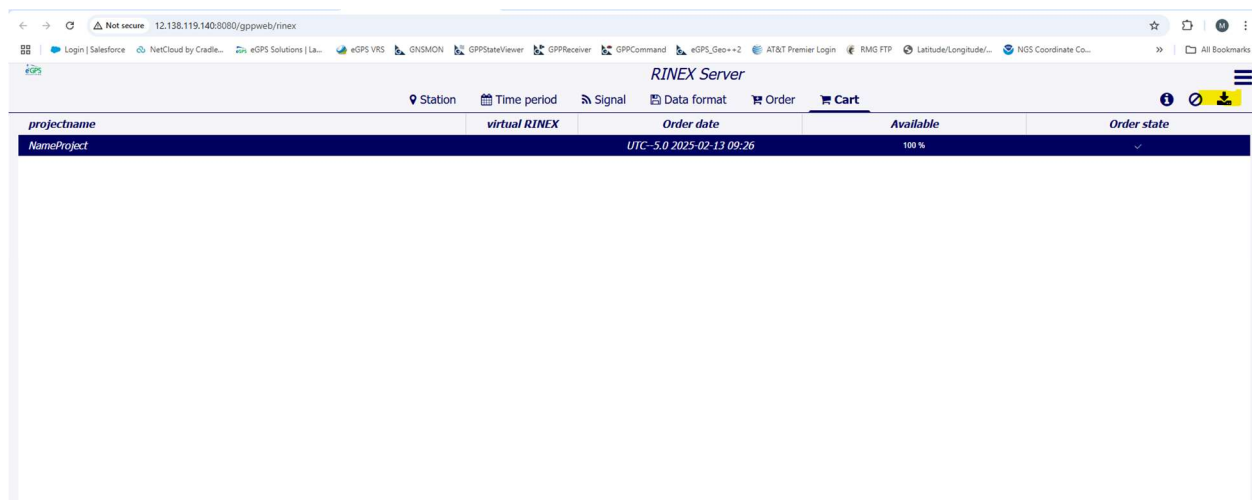
In the Cart Tab press the order for free tab to start processing the data.



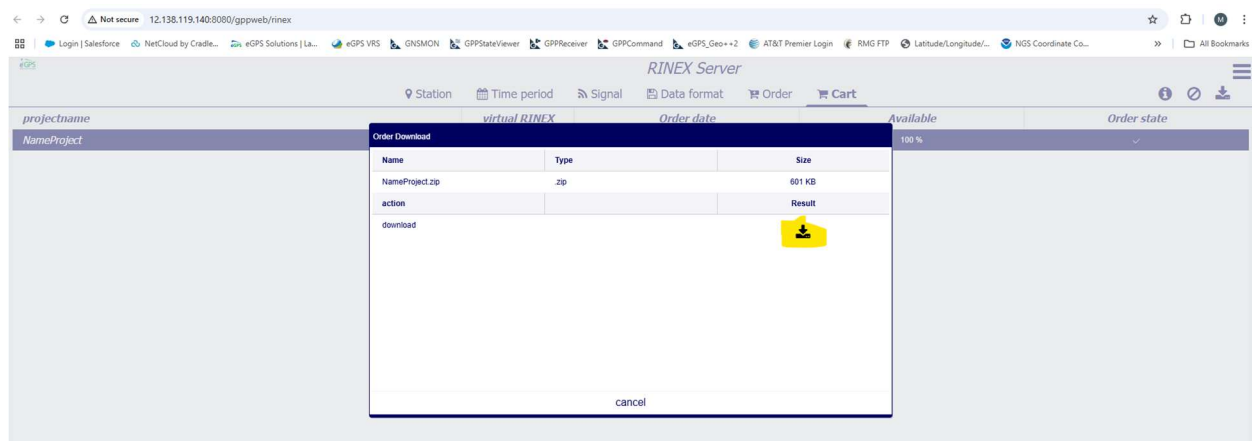
Select yes in the Prompt window.



Data will be processed, indicated by the processing wheel under order state, and will take time depending on the amount of data collected.



Once that data is processed a check mark will appear under the order state. Select the project you want to download and click on the download icon on the top right.



You will be prompted to an order download tab. Click on the download icon to download.