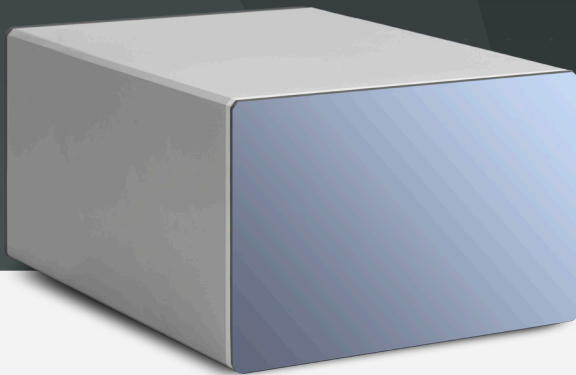




# CEPTON

## 3D perception for the smart machines of tomorrow

Cepton is shipping the next generation of 3D sensing solutions for automotive, industrial and mapping applications. Our LiDAR technology delivers unrivaled performance and resolution at low cost to enable perception for the smart machines of tomorrow.



### SORA 200 LiDAR

AERIAL AND GROUND-BASED MAPPING

LONG RANGE › **200 meters**

HIGH FRAME RATE › **200 Hz**

LIGHT WEIGHT › **550 grams**

### The SORA 200 LiDAR brings perception to new heights.

SORA 200 delivers long-range, high-resolution and low-cost mapping capabilities to aerial or ground-based vehicles. Its lightweight design is ideal for UAVs or unmanned robots tasked with map development.

**LIGHTWEIGHT:** At 550 grams, the SORA 200 can be deployed in situations where payload size matters. Its lighter weight means longer trips with less need to stop for a refuel or recharge.

**LONG-RANGE:** With its 200 meters range, the SORA 200 allows unmanned vehicles to cover more ground and reduce the total amount of trips needed for map creation, directly translating into cost savings. For aerial applications, the SORA 200 allows drones to fly higher. The dual scanning lines allow for stronger LiDAR penetration for more accurate map building.

**HIGH-RESOLUTION:** With a 200 Hz frame rate, vehicles equipped with the SORA 200 can operate faster while maintaining high-quality map data collection.

System Parameter	SORA 200 (Mapping)
Detection Range (m)	200
Weight (g)	550
Lines/Pixels	300 H, 2 V
FOV	60° H, 18° V (2 lines: +9°/-9°)
Angular Resolution	0.2 deg H, 18 deg V
Frame Rate (Hz)	200
Size (WxHxD) inch	3.5x2.6x4
Power Consumption (W)	12
Range Resolution	2.5cm
PPS/NMEA	Yes
Multi Return	Up to Two Returns
Output	100 Mbps Ethernet, UDP Packet Synchronized Timestamps Position, Distance, Intensity
Developer Platform Support	Linux (Ubuntu, Fedora), Windows Mac OS X, Native Python Bindings Robot Operating System (ROS) NVIDIA Drive PX2, Jetson TX2

Connect with us to discuss product line and specifications, orders, availability or general inquiries.

Cepton Technologies, Inc.  
103 Bonaventura Drive San Jose, CA 95134  
Tel: 408 493 6246 | Email: [info@ceptontech.com](mailto:info@ceptontech.com)

LEARN MORE  
[www.cepton.com](http://www.cepton.com)